

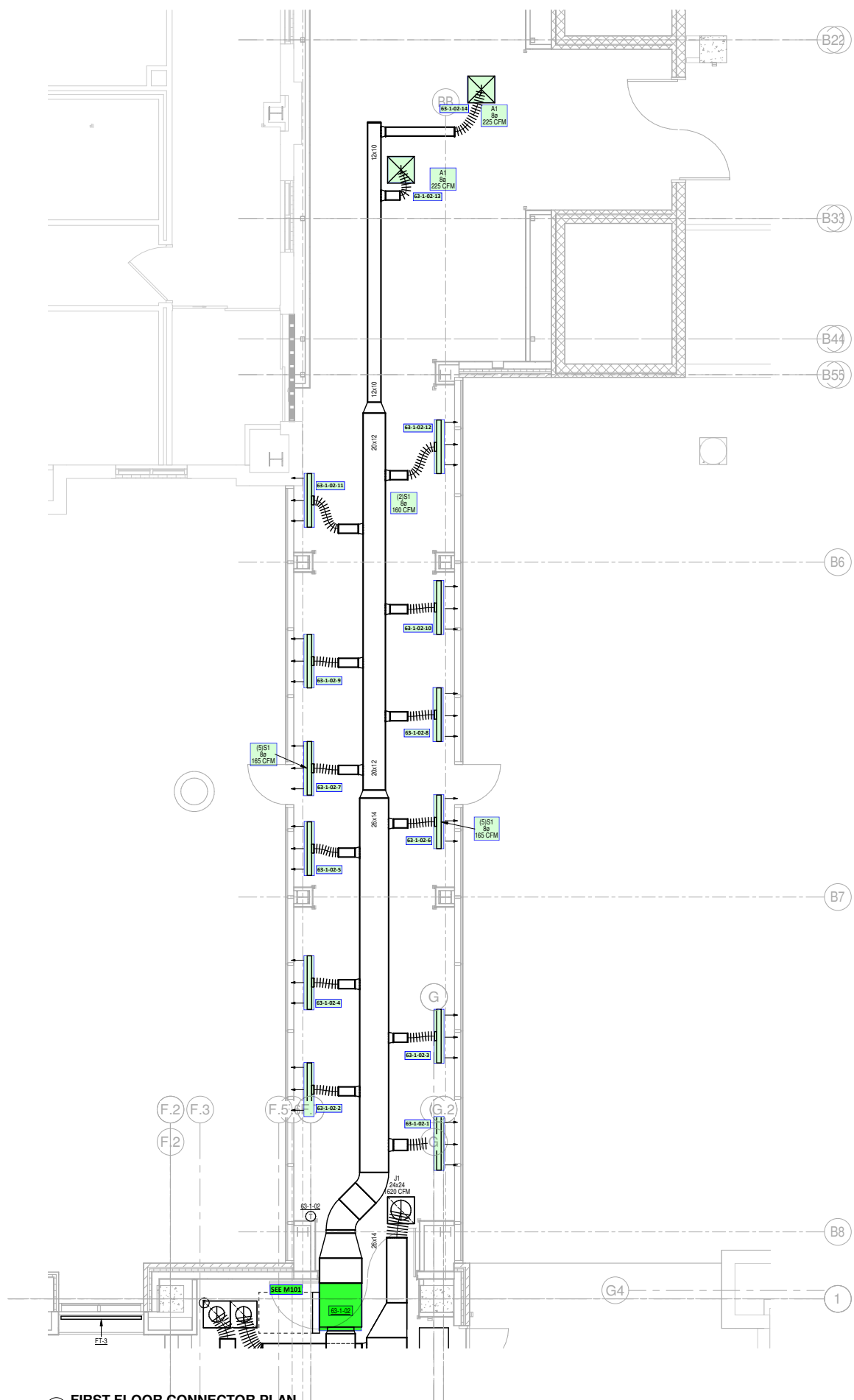
GENERAL NOTES

- A. FIRE BARRIERS - CBC 717.5.2 EXCEPTION 3 / FIRE PARTITIONS - CBC 717.5.4 EXCEPTION 4
 FIRE DAMPERS ARE NOT REQUIRED (UNLESS SHOWN ON FLOOR PLANS OR SCHEMATICS) AT PENETRATIONS OF FIRE BARRIERS WHERE DUCT WALLS ARE PENETRATED BY DUCTED HVAC SYSTEMS, HAVING A REQUIRED FIRE RESISTANCE RATING OF 1 HOUR OR LESS IN AREAS OTHER THAN GROUP H AND ARE IN BUILDINGS EQUIPPED THROUGHOUT WITH AN AUTOMATIC SPRINKLER SYSTEM IN ACCORDANCE WITH SECTION 903.3.1.1 OR 903.3.2. HVAC SYSTEM SHALL BE CONSTRUCTED OF SHEET STEEL, NOT LESS THAN 16 GAUGE. FLEXIBLE AIR CONNECTORS SHALL NOT BE PROHIBITED IN FULLY DUCTED SYSTEMS AT AIR HANDLING EQUIPMENT CONNECTIONS AND AT AIR CONNECTORS INSTALLATION TO CONNECT METAL DUCT TO A CEILING DIFFUSER AND IS LOCATED ENTIRELY WITHIN THE SAME ROOM AS THE CEILING DIFFUSER. THE FLEXIBLE AIR CONNECTOR SHALL NOT PASS THROUGH ANY WALLS, FLOORS, OR CEILINGS.
- B. SHAFT ENCLOSURES - CBC 717.5.3 EXCEPTION 6
 SMOKE DAMPERS ARE NOT REQUIRED (UNLESS SHOWN ON FLOOR PLANS OR SCHEMATICS) AT PENETRATIONS OF RATED SHAFT ENCLOSURES WHERE THE BUILDINGS EQUIPPED THROUGHOUT WITH AN AUTOMATIC SPRINKLER SYSTEM IN ACCORDANCE WITH SECTION 903.3.1.1.

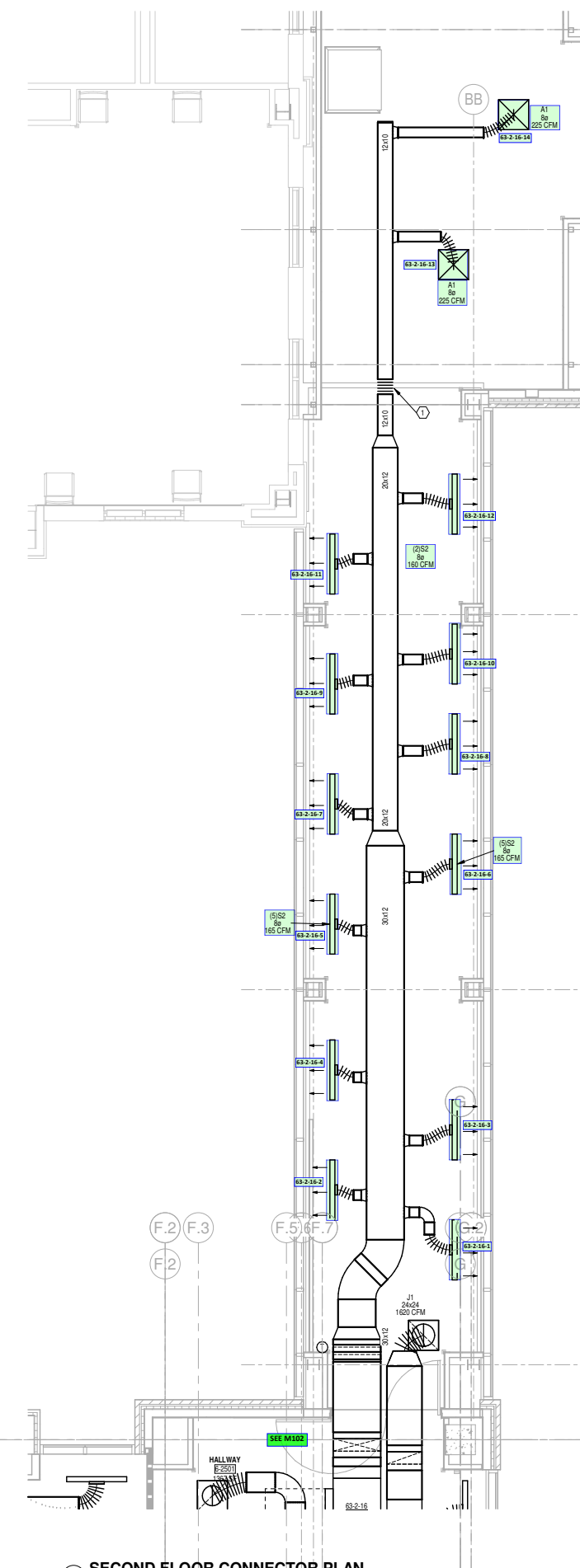
PLAN NOTES

- 1. CONNECT R SUPPLY AIR DUCTWORK TO SOUND BOOTH REFER TO MANUFACTURER'S CUTSHEETS. BALANCE TO CFM INDICATED.
- 2. ROUND DUCTWORK SERVING ROOM SHALL BE LOCATED BELOW BOTTOM OF SHAFT ENCLOSURE ABOVE CEILING AND SHALL NOT REQUIRE DAMPERS.
- 3. DIGITAL ROOM PRESSURE MONITOR ON WALL THRU-THE-WALL ROOM PRESSURE SENSORS SHALL BE MOUNTED ABOVE THE DOOR. INSTALL PER MANUFACTURER'S RECOMMENDATIONS. ROOM PRESSURE MONITOR SHALL BE PROVIDED BY ATC AND PROGRAMMED TO ALARM IF THE ISOLATION ROOM DROPS BELOW 0.1" NEGATIVE PRESSURE WITH RESPECT TO CORRIDOR.
- 4. DROP COOLING CONDENSATE DRAIN TO BELOW SINK. COORDINATE TIE-IN TO SANITARY WITH PLUMBING CONTRACTOR. PROVIDE AIR GAP AT CONNECTION.

1 FIRST FLOOR PLAN - HVAC
 SCALE: 1/8" = 1'-0"



1 FIRST FLOOR CONNECTOR PLAN
SCALE: 1/4" = 1'-0"



2 SECOND FLOOR CONNECTOR PLAN
SCALE: 1/4" = 1'-0"

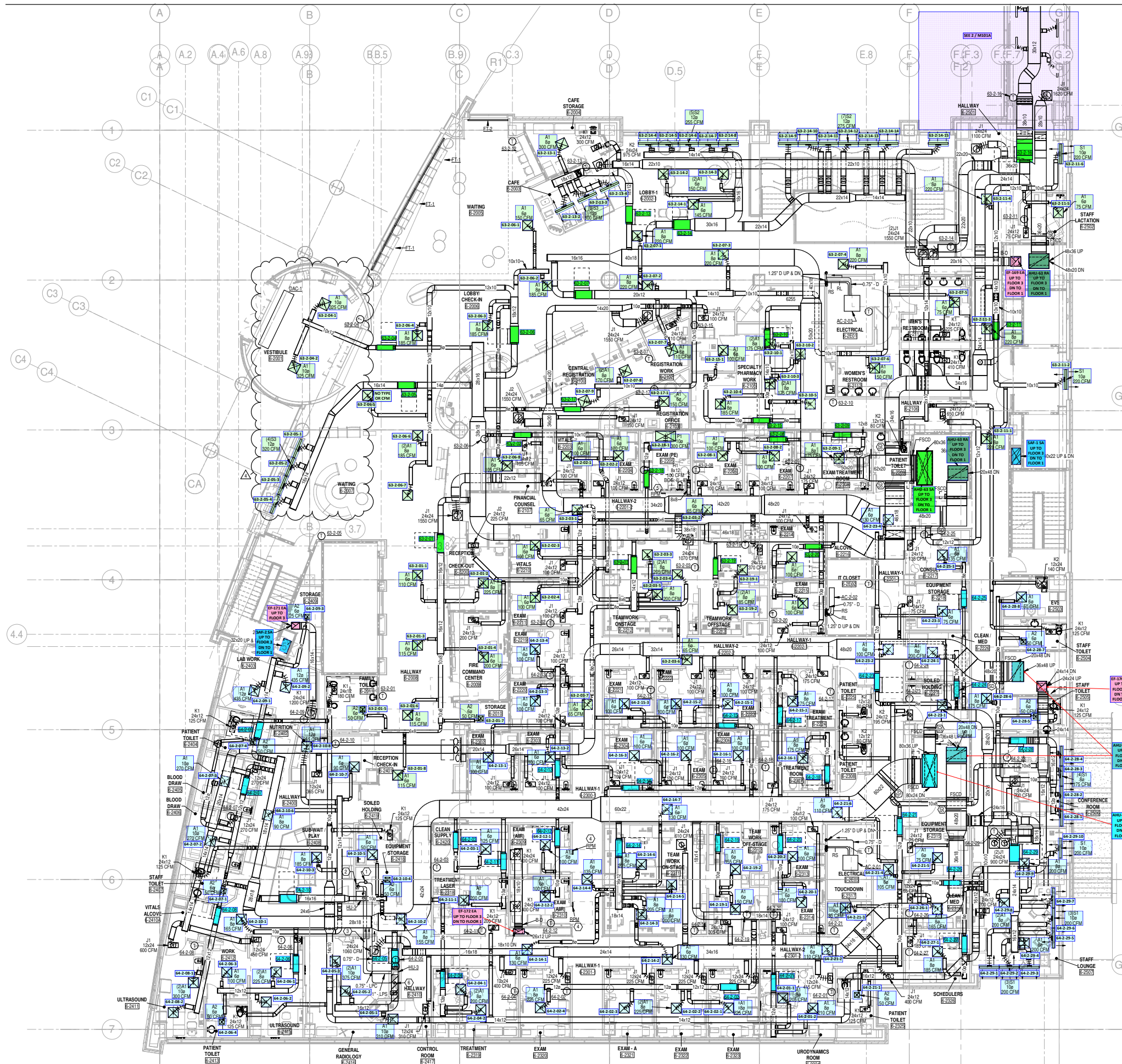
GENERAL NOTES

A. FIRE BARRIERS - OBC 717.5.2 EXCEPTION 3 / FIRE PARTITIONS - OBC 717.5.4 EXCEPTION 4
 FIRE DAMPERS ARE NOT REQUIRED (UNLESS SHOWN ON FLOOR PLANS OR SCHEMATICS) AT PENETRATIONS OF FIRE BARRIERS WHERE SUCH WALLS ARE PENETRATED BY DUCTED HVAC SYSTEMS, HAVING A REQUIRED FIRE-RESISTANCE RATING OF 1 HOUR OR LESS IN AREAS OTHER THAN GROUP H AND ARE IN BUILDINGS EQUIPPED THROUGHOUT WITH AN AUTOMATIC SPRINKLER SYSTEM IN ACCORDANCE WITH SECTION 903.3.1.1 OR 903.3.2. HVAC SYSTEM SHALL BE CONSTRUCTED OF SHEET STEEL NOT LESS THAN 26 GAUGE. FLEXIBLE AIR CONNECTORS SHALL NOT BE PROHIBITED IN FULLY DUCTED SYSTEMS AT AIR HANDLING EQUIPMENT CONNECTIONS AND AT AIR CONNECTORS INSTALLATION TO CONNECT METAL DUCT TO A CEILING DIFFUSER AND IS LOCATED ENTIRELY WITHIN THE SAME ROOM AS THE CEILING DIFFUSER. THE FLEXIBLE AIR CONNECTOR SHALL NOT PASS THROUGH ANY WALLS, FLOORS, OR CEILINGS.

B. SHAFT ENCLOSURES - OBC 717.5.3 EXCEPTION 6
 SMOKE DAMPERS ARE NOT REQUIRED (UNLESS SHOWN ON FLOOR PLANS OR SCHEMATICS) AT PENETRATIONS OF RATED SHAFT ENCLOSURES WHERE THE BUILDINGS EQUIPPED THROUGHOUT WITH AN AUTOMATIC SPRINKLER SYSTEM IN ACCORDANCE WITH SECTION 903.3.1.1.

PLAN NOTES

1. PROVIDE FLEXIBLE DUCT CONNECTOR AT BUILDING EXPANSION JOINT.



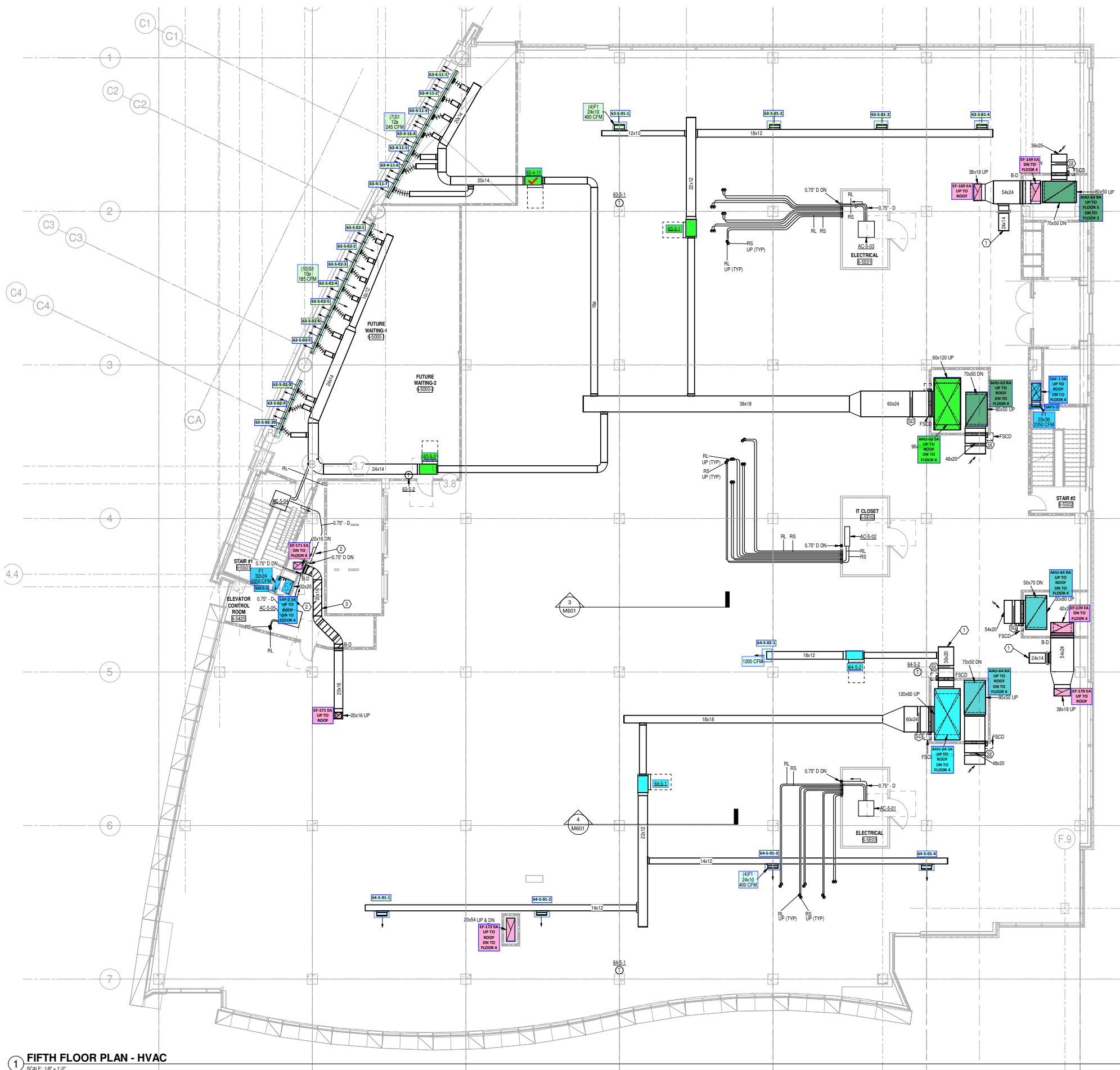
GENERAL NOTES

- A. FIRE BARRIERS - CBC 717.5.2 EXCEPTION 3 / FIRE PARTITIONS - CBC 717.5.4 EXCEPTION 4
 FIRE DAMPERS ARE NOT REQUIRED (UNLESS SHOWN ON FLOOR PLANS OR SCHEMATICS) AT PENETRATIONS OF FIRE BARRIERS WHERE SUCH WALLS ARE PENETRATED BY DUCTED HVAC SYSTEMS, HAVING A REQUIRED FIRE RESISTANCE RATING OF 1 HOUR OR LESS IN AREAS OTHER THAN GROUP H AND ARE IN BUILDINGS EQUIPPED THROUGHOUT WITH AN AUTOMATIC SPRINKLER SYSTEM IN ACCORDANCE WITH SECTION 903.3.1.1 OR 903.1.2. HVAC SYSTEM SHALL BE CONSTRUCTED OF SHEET STEEL NOT LESS THAN 26 GAUGE. FLEXIBLE AIR CONNECTORS SHALL NOT BE PROHIBITED IN FULLY DUCTED SYSTEMS AT AIR HANDLING EQUIPMENT CONNECTIONS AND AT AIR CONNECTORS INSTALLATION TO CONNECT METAL DUCT TO A CEILING DIFFUSER AND IS LOCATED ENTIRELY WITHIN THE SAME ROOM AS THE CEILING DIFFUSER. THE FLEXIBLE AIR CONNECTOR SHALL NOT PASS THROUGH ANY WALLS, FLOORS, OR CEILINGS.
- B. SHAFT ENCLOSURES - CBC 717.5.3 EXCEPTION 6
 SMOKE DAMPERS ARE NOT REQUIRED (UNLESS SHOWN ON FLOOR PLANS OR SCHEMATICS) AT PENETRATIONS OF RATED SHAFT ENCLOSURES WHERE THE BUILDINGS EQUIPPED THROUGHOUT WITH AN AUTOMATIC SPRINKLER SYSTEM IN ACCORDANCE WITH SECTION 903.3.1.1.

PLAN NOTES

- 1. FLOOR DRAIN. REFER TO PLUMBING DRAWINGS.
- 2. EXTEND DRAIN PIPE TO DRISTEM DRAIN. COOLER IN THIS APPROXIMATE LOCATION. DRAIN PIPE FROM DRAIN. COOLER SHALL EXTEND TO FLOOR DRAIN IN THIS EQUIPMENT ROOM. PROVIDE CLEAN-OUTS AT EACH CHANGE IN DIRECTION.
- 3. 0.75" CONDENSATE DRAIN PIPE AND 1" STEAM PIPE FROM STEAM GENERATOR TO HUMIDIFIER GRID. PIPING MUST SLOPE BACK FROM THE GRID TO THE GENERATOR AND DRAIN/COOLER WITHOUT TRAPPING.
- 4. DIGITAL ROOM PRESSURE MONITOR ON WALL. THRU-THE-WALL ROOM PRESSURE SENSORS SHALL BE MOUNTED ABOVE THE DOOR. INSTALL PER MANUFACTURER'S RECOMMENDATIONS. ROOM PRESSURE MONITOR SHALL BE PROVIDED BY ATC AND PROGRAMMED TO ALARM IF THE ISOLATION ROOM DROPS BELOW 0.01" NEGATIVE PRESSURE WITH RESPECT TO CORRIDOR.
- 5. DIGITAL ROOM PRESSURE MONITOR ON WALL. THRU-THE-WALL ROOM PRESSURE SENSORS SHALL BE MOUNTED ABOVE THE DOOR. INSTALL PER MANUFACTURER'S RECOMMENDATIONS. ROOM PRESSURE MONITOR SHALL BE PROVIDED BY ATC AND PROGRAMMED TO ALARM IF THE ISOLATION ROOM DROPS BELOW 0.01" POSITIVE PRESSURE WITH RESPECT TO CORRIDOR.
- 6. DUCTWORK SHALL BE STAINLESS STEEL MINIMUM OF 1" UPSTREAM AND 5" DOWNSTREAM OF HUMIDIFIER GRID. ALL SEAMS SHALL BE SUCROINED WATER TIGHT. NO LONGITUDINAL SEAMS ON THE BOTTOM. BOTTOM SHALL SLOPE TO A 0.75" DRAIN FITTING. DRAIN PIPING SHALL BE TRAPPED ABOVE CEILING AND FLOW BY GRAVITY TO FLOOR DRAIN.

SECOND FLOOR PLAN - HVAC
 SCALE: 1/8" = 1'-0"



GENERAL NOTES

- A. FIRE BARRIERS - OBC 717.5.2 EXCEPTION 3 / FIRE PARTITIONS - OBC 717.5.4 EXCEPTION 4
- FIRE DAMPERS ARE NOT REQUIRED (UNLESS SHOWN ON FLOOR PLANS OR SCHEMATICS) AT PENETRATIONS OF FIRE BARRIERS WHERE SUCH WALLS ARE PENETRATED BY DUCTED HVAC SYSTEMS, HAVING A REQUIRED FIRE RESISTANCE RATING OF 1 HOUR OR LESS IN AREAS OTHER THAN GROUP I AND ARE IN BUILDINGS EQUIPPED THROUGHOUT WITH AN AUTOMATIC SPRINKLER SYSTEM IN ACCORDANCE WITH SECTION 903.3.1.1 OR 903.3.2. HVAC SYSTEMS SHALL BE CONSTRUCTED OF SHEET STEEL NOT LESS THAN 16 GAUGE. FLEXIBLE AIR CONNECTORS SHALL NOT BE PROHIBITED IN FULLY DUCTED SYSTEMS AT AIR HANDLING EQUIPMENT CONNECTIONS AND AT AIR CONNECTORS INSTALLATION TO CONNECT METAL DUCT TO A CEILING DIFFUSER AND IS LOCATED ENTIRELY WITHIN THE SAME ROOM AS THE CEILING DIFFUSER. THE FLEXIBLE AIR CONNECTOR SHALL NOT PASS THROUGH ANY WALLS, FLOORS, OR CEILING.
- B. SHAFT ENCLOSURES - OBC 717.5.3 EXCEPTION 6
- SMOKE DAMPERS ARE NOT REQUIRED (UNLESS SHOWN ON FLOOR PLANS OR SCHEMATICS) AT PENETRATIONS OF RATED SHAFT ENCLOSURES WHERE THE BUILDING IS EQUIPPED THROUGHOUT WITH AN AUTOMATIC SPRINKLER SYSTEM IN ACCORDANCE WITH SECTION 903.3.1.1.

PLAN NOTES

- CAP DUCTWORK FOR FUTURE EXTENSION.
- ROUTE PIPING TO AVOID BEING OVERTOP OF ELECTRICAL EQUIPMENT. WHERE PIPING PASSES OVER ELECTRICAL EQUIPMENT, PROVIDE SECONDARY GRAB PAIL UNDERNEATH PIPING.
- DUCTWORK WITHIN ELEVATOR CONTROL ROOM SHALL BE 2-HOUR FIRE-WRAPPED.

1 FIFTH FLOOR PLAN - HVAC
SCALE: 1/8" = 1'-0"

